

THE NANT BORDON FOOTBRIDGE A GREAT WAY TO GET TO THE LAC VERT!

This suspended walkway crosses the Nant Bordon 20 metres above the river. **As you set out from Plateau d'Assy, the former sanatorium resort** is home to a number of historical and heritage treasures, and offers **unique views of Mont-Blanc**. Bicycles permitted, pushed not ridden. No motorcycles or horses.

WHAT TO SEE



Notre-Dame-de-Toute-Grâce Church, a key building in the renewal of religious art. (M.Novarina, architect, 1950).



Contemporary sculpture route, a great open-air museum with some fifteen monumental works. (*La Porte d'Eau*, A.Cardenas, 1973)



Jardin des Cimes, an imaginary stroll to explore the Alpine sceneries and gardens of the world.



La Crémérie studio-gallery. Contemporary art centre hosting temporary exhibitions.



WHERE TO EAT IN PLATEAU D'ASSY

La Cantine Tel. +33 (0)4 50 53 63 38

Le Café du Jardin Tel. +33 (0)4 50 21 50 87

Le Fournil du Plateau Tel. +33 (0)4 50 55 81 64

Le P'tit Panier d'Assy Tel. +33 (0)4 50 89 98 84

BETWEEN PLATEAU D'ASSY AND PLAINE-JOUX (PRAZ-COUTANT)

Le Fontenay Mont-Blanc Tel. +33 (0)4 50 93 89 92

IN PLAINE-JOUX

Restaurant Lou Pachran Tel. +33 (0)4 50 58 82 47

Restaurant La Bergerie Tel. +33 (0)4 50 93 80 51

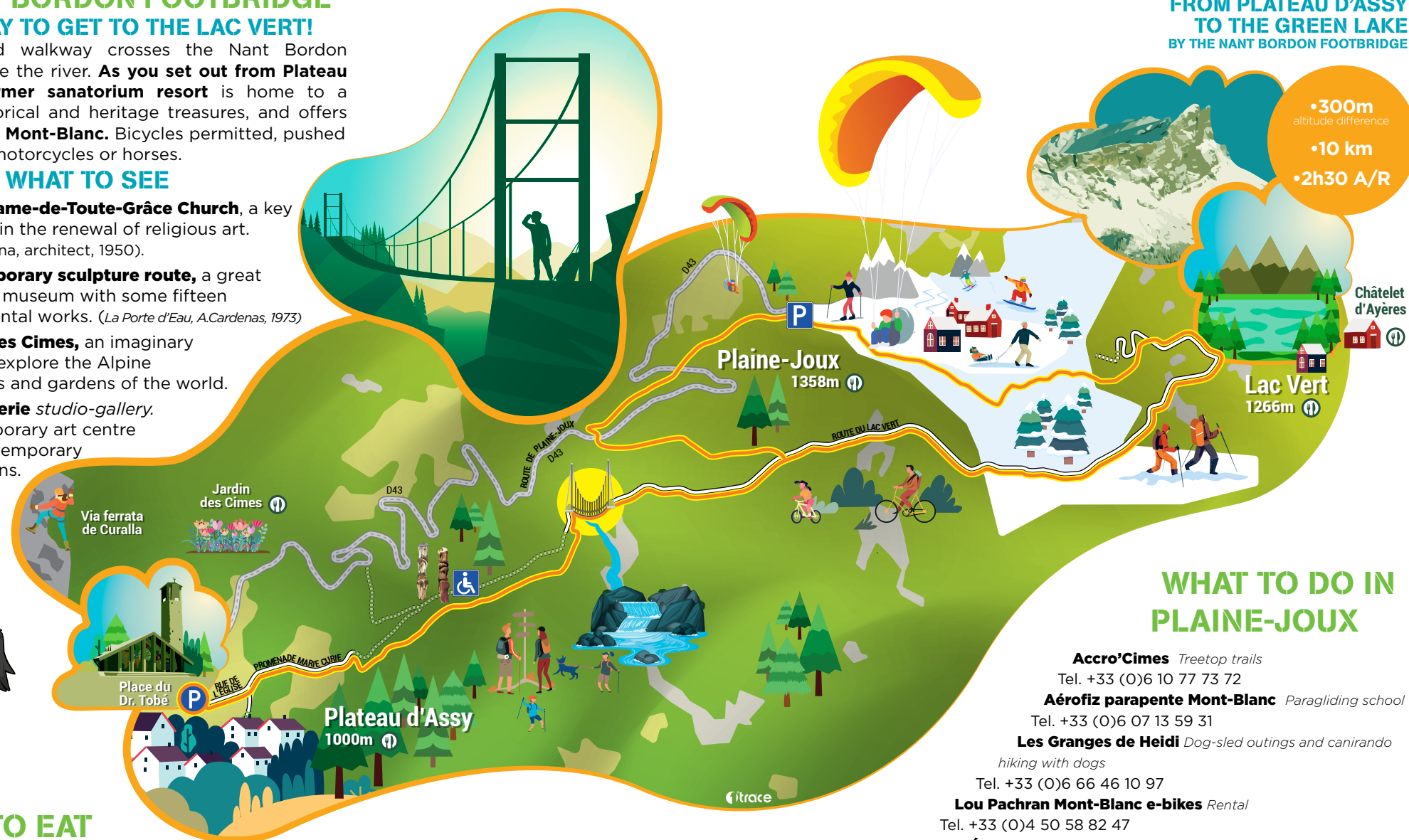
Chalet Lilly Tel. +33 (0)4 50 58 83 13

Restaurant du Lac Vert Tel. +33 (0)4 50 78 55 14

Restaurant Le Châtelet d'Ayères Tel. +33 (0)4 50 58 85 32

**FROM PLATEAU D'ASSY
TO THE GREEN LAKE
BY THE NANT BORDON FOOTBRIDGE**

•300m
altitude difference
•10 km
•2h30 A/R



WHAT TO DO IN PLAINE-JOUX

Accro'Cimes Treetop trails

Tel. +33 (0)6 10 77 73 72

Aérofiz parapente Mont-Blanc Paragliding school

Tel. +33 (0)6 07 13 59 31

Les Granges de Heidi Dog-sled outings and canirando

hiking with dogs

Tel. +33 (0)6 66 46 10 97

Lou Pachran Mont-Blanc e-bikes Rental

Tel. +33 (0)4 50 58 82 47

Les Écuries d'antan Horse-riding in the summer

Tel. +33 (0)4 50 78 28 40

Passy Nature Reserve Centre

Tel. +33 (0)4 50 90 23 07

Ecole du Ski Français (French ski school)

Tel. +33 (0)4 50 58 83 89

Skifiz Sport Skimium Tel. +33 (0)4 50 58 87 21

Find out more about what is open
on www.passy-mont-blanc.com

IDEAS FOR HIKES

© Godefroy de Maupéou

LAC VERT CIRCUIT

4KM - +100M ALTITUDE DIFFERENCE, ABOUT 1HR

Easy walk possible in all seasons.

The Lac Vert, a listed natural site, is as unmissable as it is magical.

From Plaine-Joux, go down the road and the paths through the forest following the signs to get to the Lac Vert from below. For the return walk, starting from the Restaurant du Lac Vert car park, go up the path taking you to the Châtelet d'Ayères refuge then turn left and pass above the Lake and go to Plaine-Joux.

TOUR DES AYERES

8KM - +390M ALTITUDE DIFFERENCE, ABOUT 3HRS

Hike through forests and mountain pastures with charming Alpine hamlets.

From Plaine-Joux, go up through the resort to Barmus along the vehicle track. Continue along a flat stretch passing by Ayères des Rocs and Ayères d'en-Haut. After Ayères des Pierrières, continue along the track that goes down to Chalets du Souay and then to the Châtelet d'Ayères refuge. Go down further to the Lac Vert and carry on to your departure point.

BARMUS CIRCUIT ON SNOWSHOES

8KM - +390M ALTITUDE DIFFERENCE, ABOUT 3HRS

Easy and varied path. Signposted path allowing beginners to go snowshoeing in complete safety.

Starting from Passy Plaine-Joux, behind the Maison des Lutins, there's a signposted path going off to the right and down into the forest passing by the paragliding launch area.

This path will take you down below the Blaireau ski-lift then on to the Lac Vert.

You'll then go up to the heights overlooking the resort, passing by Châtelet d'Ayères and the Mollays, where you'll be able to admire the breathtaking view between the Mont-Blanc range and Aravis.

HOW TO GET TO THE FOOTBRIDGE

FROM PLATEAU D'ASSY

Park your vehicle at the car park on Place Tobé, rue de l'église. A footpath through the forest then takes you to the footbridge. You carry on for an hour along the old road that goes to the Lac Vert. You can then go on to Plaine-Joux, this will take about 30 minutes.

For people with reduced mobility: There are 4 parking spaces at the crossroads between the Promenade Marie Curie and the Route du Lac Vert, near the totem poles.

FROM PLAINE-JOUX

Walk down to the Lac Vert. 100 metres before you get to the Restaurant du Lac Vert, take the path on your right, then carry on for 35 minutes. It will take you about an hour and half to get there.



FIND US AT



[Passy Mont-Blanc Tourisme](https://www.facebook.com/Passy-Mont-Blanc-Tourisme)



[@Passymontblanc](https://www.instagram.com/Passymontblanc)



PASSY TOURIST OFFICE.

At the Mountain Store

Avenue Lémans Mont-Blanc 74190 Passy
Monday to Saturday, 9.30am to 12.30pm and
2pm to 6pm.

Tel. +33 (0)4 50 58 80 52

info@passy-mont-blanc.com

www.passy-mont-blanc.com

PASSY
TOURISME



NANT BORDON FOOTBRIDGE

FROM PLATEAU D'ASSY TO PLAINE-JOUX



www.passy-mont-blanc.com

No littering - Published by: Passy Tourisme & creation, illustration and printing: Ière Trace Salanches.

